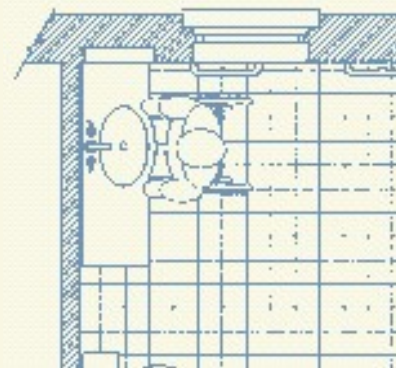




5

Planning *Accessible*
Bathrooms



Planning Accessible Bathrooms



Portable Furnishings

This bathroom was designed with generous maneuvering clearances around the toilet in order to facilitate wheelchair transfer. After construction, the arrangement was “tested” and portable furnishings like the towel shelves and the wicker basket were added. Since these accessories are not built in, the transfer clearances could be precisely adjusted so that they were adequate, but not excessive. This approach also provides flexibility if the family’s needs change in the future.

BECAUSE DAILY HYGIENE IS critical to everyone’s health, bathroom accessibility is an important component of residential design. The manner in which people take care of hygiene varies, so fixture arrangements for wheelchair users need to be tailored to the specific homeowner. Before examining each bathroom fixture’s design requirements (see Chapter 6), it is useful to examine general planning principles for accessible bathrooms. These facilities ideally should reflect a user’s specific needs; however, most bathrooms are shared among family members, so compromises may be appropriate. User needs and capabilities also change with time, so think about future needs when planning your bathroom. A roll-in shower, for example, would be convenient when transfer to a bathtub becomes too difficult.